



Carbondale & Rural Fire Protection District
Meeting of the Board of Directors
May 13, 2026
11:00 a.m.

Agenda

- A. Call to order & roll call
- B. Consent Agenda
 - 1. Approve Previous Minutes
 - 2. Current Bills & Balances
- C. Persons Present Not on the Agenda
- D. Staff Reports
 - 1. Chief's Report
 - a. Wildfire Seasonal Outlook
 - 2. Attorney's Report
 - 3. Other
- E. Financial Report
 - 1. Other
- F. Old Business
 - 1. Other
- G. New Business
 - 1. Resolution 2026-004, Fire Code Fee Adoption Schedule
 - 2. Other
- H. Adjourn

CARBONDALE & RURAL FIRE PROTECTION DISTRICT BOARD OF DIRECTORS | REGULAR MEETING

APRIL 8, 2026



The Board of Directors of the Carbondale & Rural Fire Protection District met for their regular meeting on April 8, 2026 at the Carbondale Fire Headquarters/Training Building. President Gene Schilling called the meeting to order at 11:32 a.m.

ROLL CALL

Directors Present:

Gene Schilling, President
Mike Kennedy, Vice President
Michael Hassig, Secretary/Treasurer
Gretchen Stock Bell, Director
Angie Davlyn, Director

Also Present:

Rob Goodwin, Fire Chief
Jenny Cutright, Deputy Chief – Admin
Karl Oliver, Division Chief - Prevention
Josh Greene, Division Chief – Fleet and Facilities
Garrett Kennedy, Assistant Chief - EMS
Meagan Holland, Office Manager
Brandon Deter, Division Chief - Training
Eric Gross, CRFPD Counsel
Karen Tafejian

** Attended via teleconference*

CONSENT AGENDA

The items on the consent agenda were:

- Approve Current Bills and Balances
- Approve the Minutes of the March 11, 2026 regular meeting

Motion made to approve the consent agenda as noted. It passed unanimously.

PERSONS PRESENT NOT ON THE AGENDA

There were no members of the public present to address the Board.

STAFF REPORTS

Chief's Report There is a crew out on a wildfire assignment through the end of the week. The public showed increased awareness about the upcoming wildfire season. Wildfire preparedness public meetings are being scheduled throughout the District. The regional fire departments and counties are working together to share consistent messaging.

Attorney's Report The International Fire Code (IFC) adoption has been the primary focus over the past month.

Fire Marshal's Report The Fire Marshal presented the 2021 IFC code and chapter 12 of the 2024 code for adoption in the Town of Carbondale. The new code will update the fire codes being used from the 1988 version. The Board of Directors, Fire Chief, and a member appointed by the Town of Carbondale will serve as the Board of Appeals. Any violation notices will be issued by the District. Discussion regarding the amendments followed. It was noted the fees for plan review services will be presented to the Board of Directors for adoption at the regular May meeting.

**CARBONDALE & RURAL FIRE PROTECTION DISTRICT
BOARD OF DIRECTORS | REGULAR MEETING**

APRIL 8, 2026



Motion made to approve Resolution 2026-004, A Resolution of the Board of Directors of the Carbondale & Rural Fire Protection District Adopting by Reference the International Fire Code, 2021 Edition and Amending Certain Sections of Said Code and Adopting Chapter 12 of the International Fire Code, 2024 Edition. It carried and passed unanimously.

Admin Chief's Report County Clerks are asking local governments to notify them if they are considering participating in the November 2026 election. Discussion followed and the Board of Directors verbally agreed not to participate in the November 2026 election.

FINANCIAL REPORT

Sales Tax The District has received sales tax revenues for January and February. Staff is monitoring the receipts to ensure all businesses are collecting and remitting the appropriate sales tax.

2026 CAPITAL CONSTRUCTION PROJECTS

The start date for construction on Station 81 is being delayed until late summer or fall, due to subcontractor availability. Schematic drawings are expected in the next week.

NEW BUSINESS

New Employees New full-time firefighting employees have been hired, increasing daily staffing to 8. The new administrative assistant starts on Monday. Seasonal staff have been hired and will start in May.

Open Burning Open Burning is currently allowed, but is dependent on daily weather conditions.

Open House The annual Open House will be held earlier than usual due to the construction schedule.

ADJOURN

Motion made to adjourn the Board of Directors meeting at 12:19 p.m. It carried and passed unanimously.

Respectfully submitted,
Jenny Cutright, Recording Secretary

A firefighter in a yellow jacket and helmet is working in a smoky forest. The firefighter is positioned on the right side of the frame, leaning forward. In the background, there is a large fire burning, and the air is filled with thick smoke. The scene is set in a forest with tall trees.

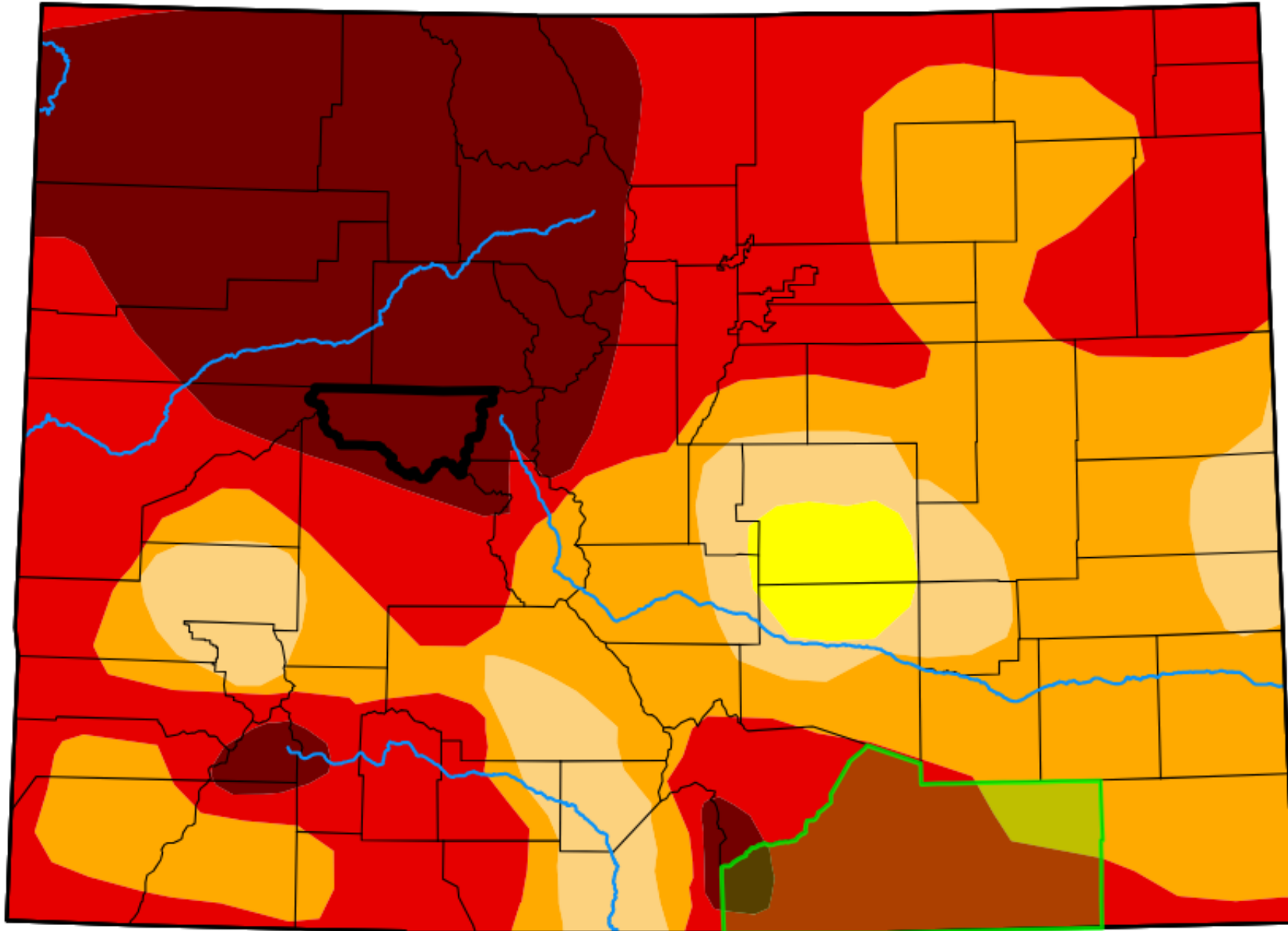
Carbondale & Rural Fire Protection District Board of Directors

2026 Wildfire Outlook, Preparedness and Response Briefing



Weather Outlook

U.S. Drought Monitor



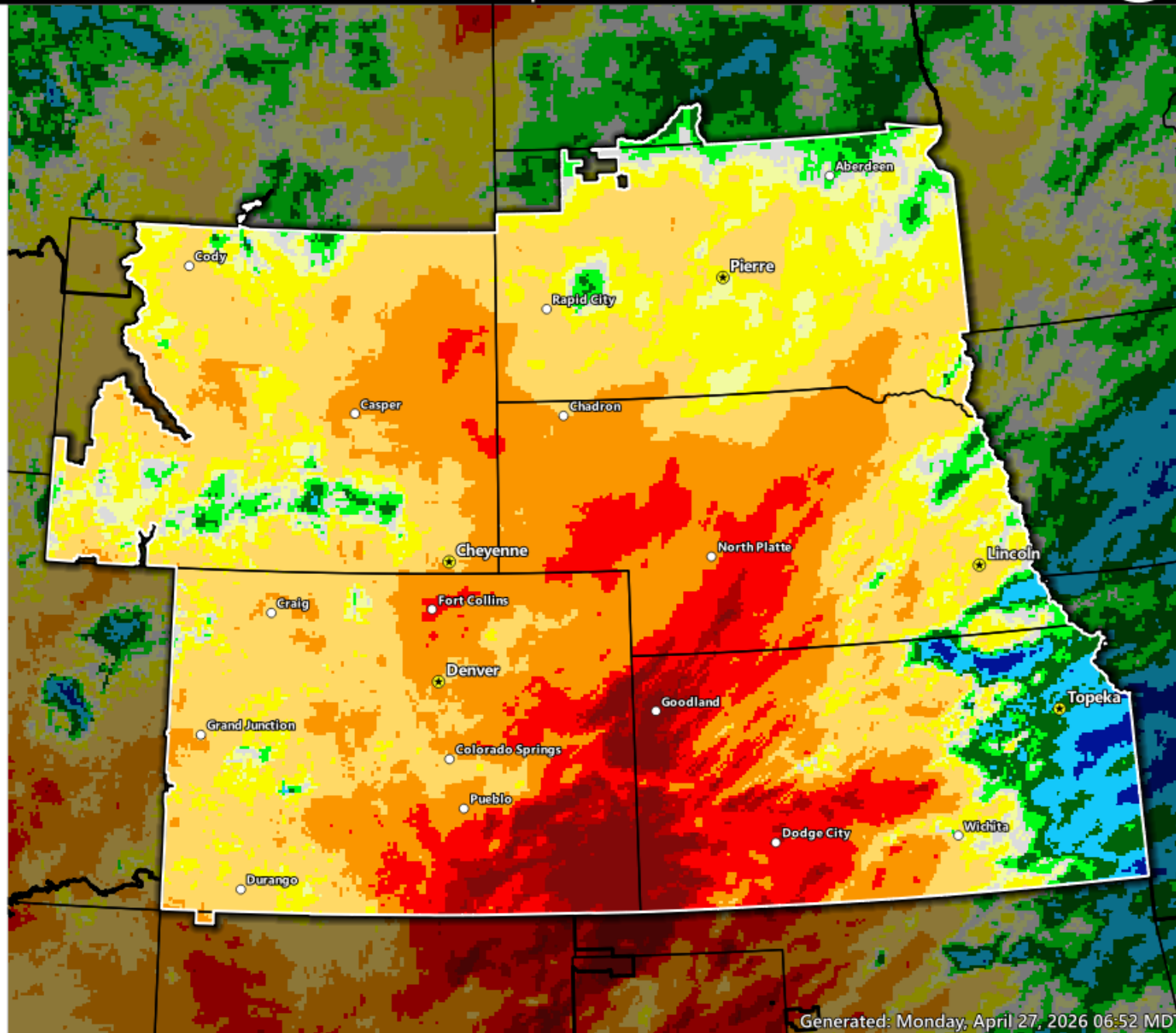
Intensity

- None
- D0 (Abnormally Dry)
- D1 (Moderate Drought)
- D2 (Severe Drought)
- D3 (Extreme Drought)
- D4 (Exceptional Drought)
- No Data



60 Day Precipitation % of Normal

- >= 600
- 400 to 600
- 300 to 400
- 200 to 300
- 150 to 200
- 125 to 150
- 110 to 125
- 100 to 110
- 90 to 100
- 75 to 90
- 50 to 75
- 25 to 50
- 10 to 25
- 5 to 10
- 0 to 5
- Missing Data



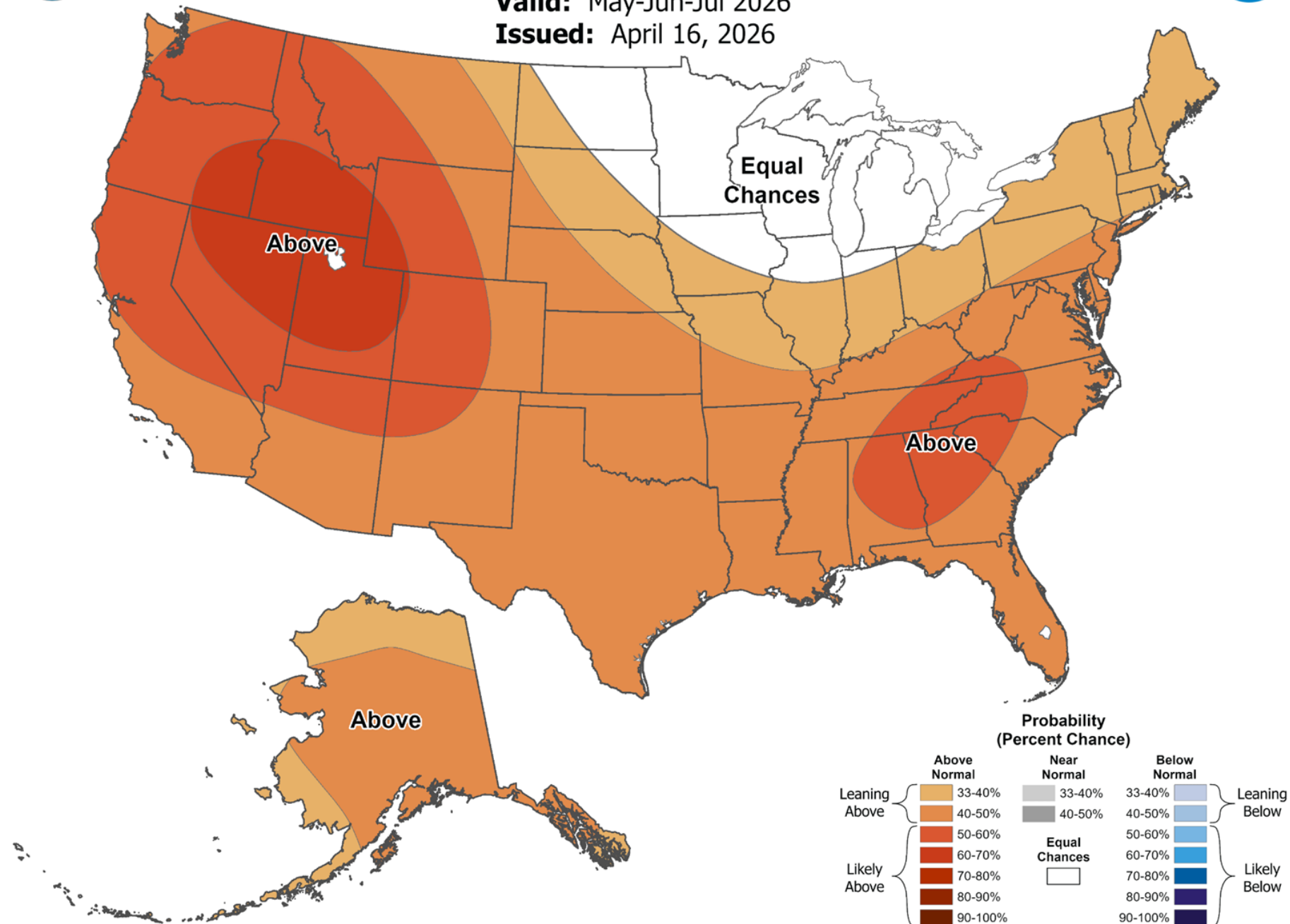


Seasonal Temperature Outlook



Valid: May-Jun-Jul 2026

Issued: April 16, 2026



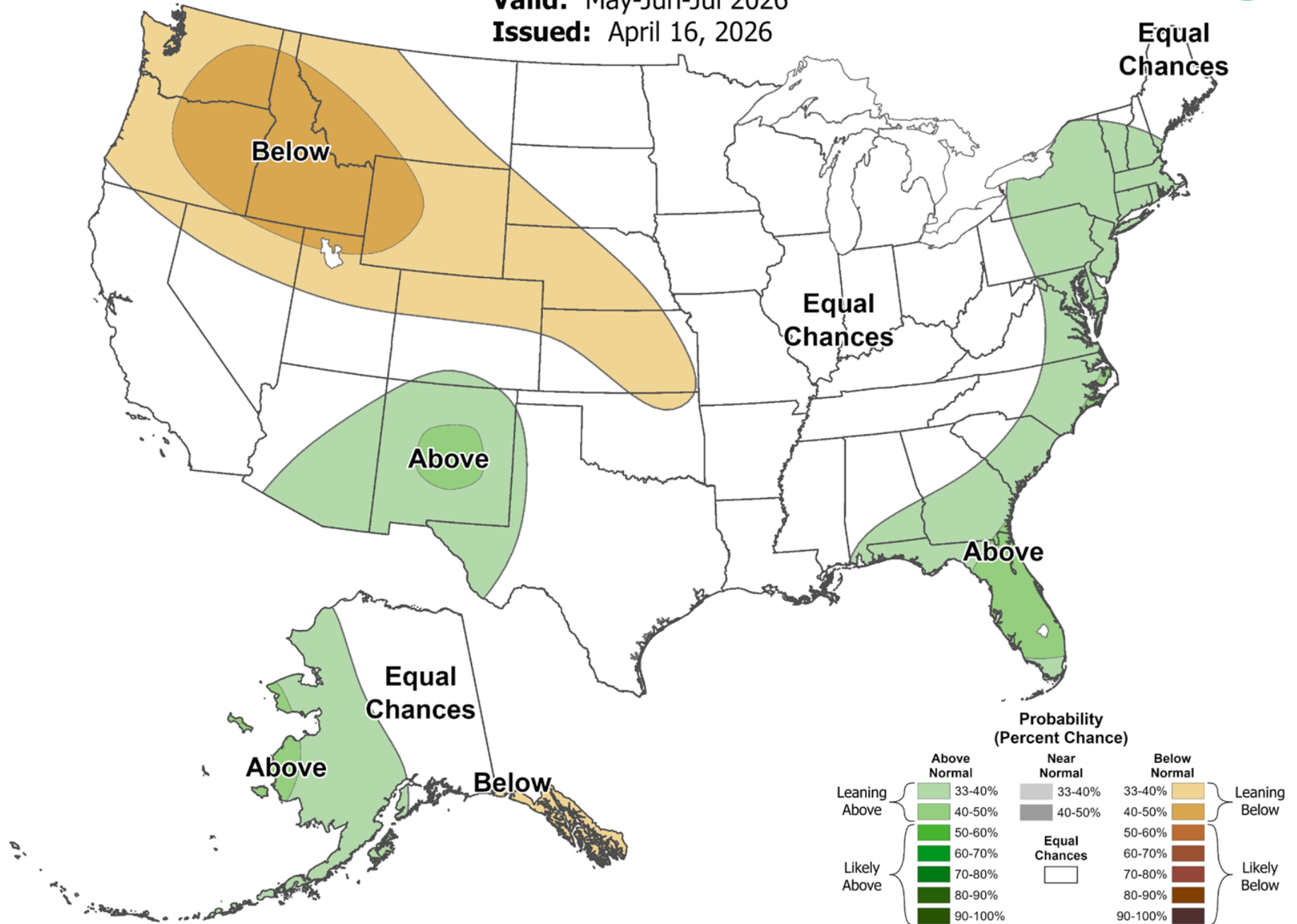


Seasonal Precipitation Outlook



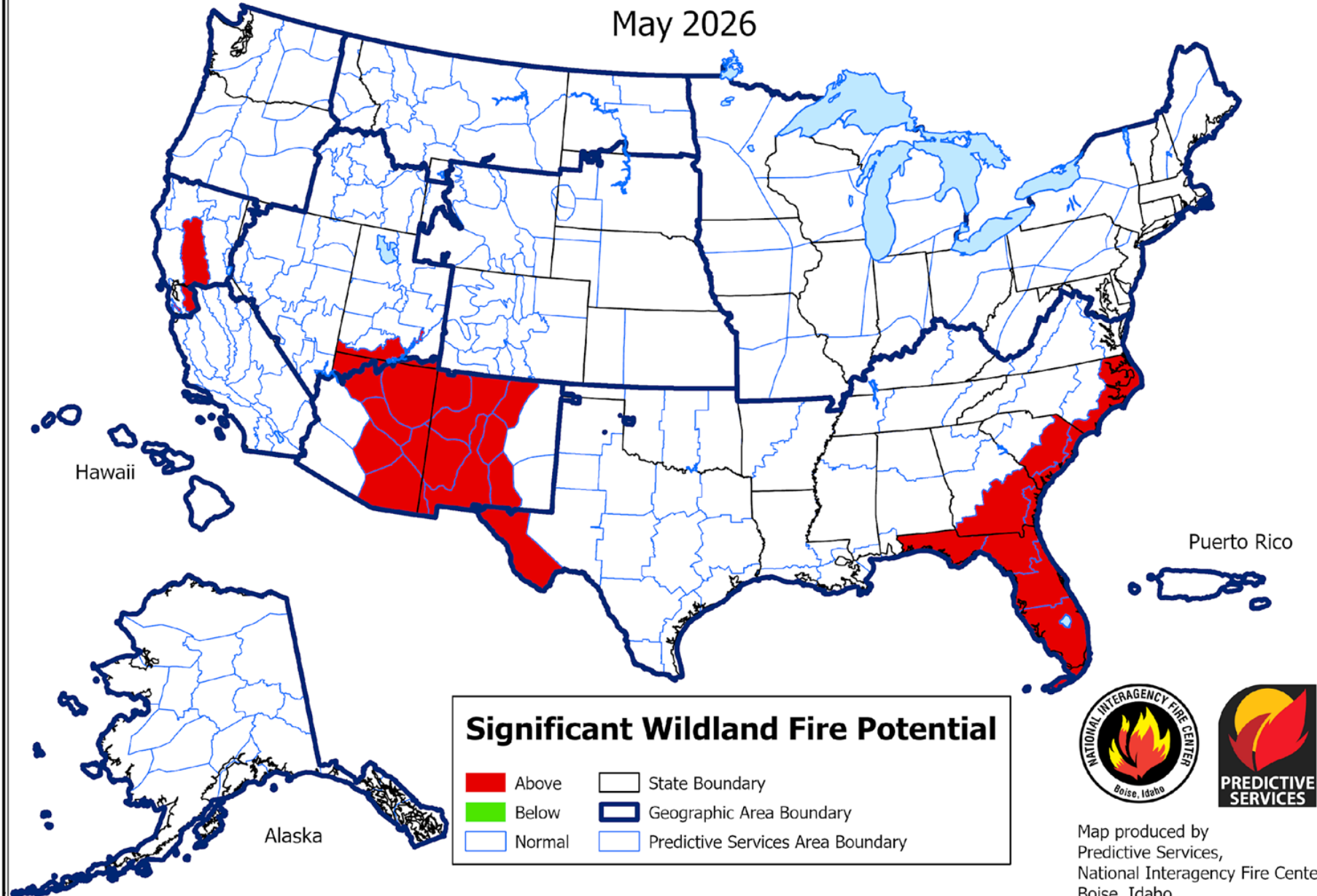
Valid: May-Jun-Jul 2026

Issued: April 16, 2026



Significant Wildland Fire Potential Outlook

May 2026

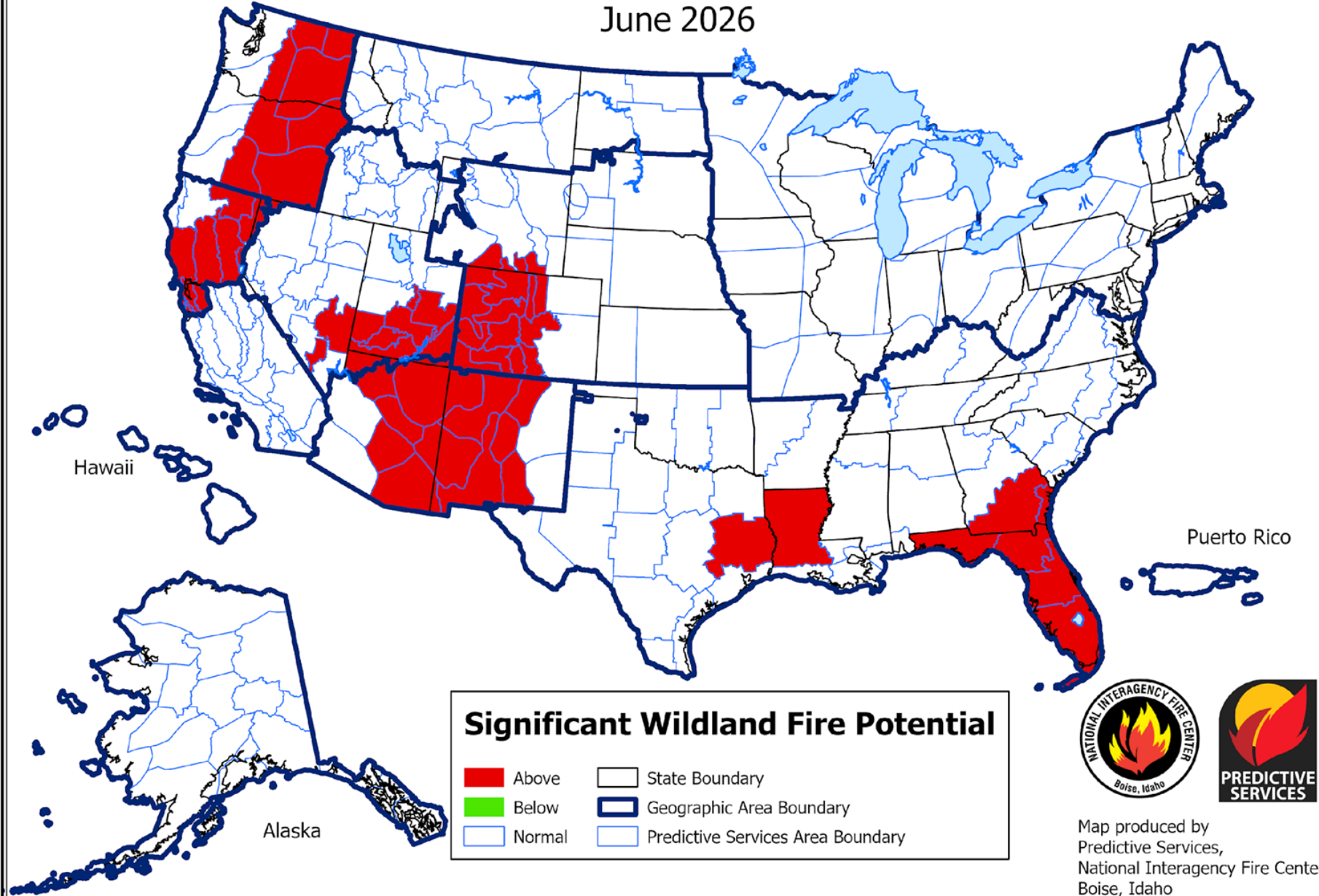


Map produced by
Predictive Services,
National Interagency Fire Center
Boise, Idaho
Issued: April 1, 2026
Next Issue: May 1, 2026

Above normal significant wildland fire potential indicates a greater than usual likelihood that significant wildland fires will occur.
Significant wildland fires should be expected at typical times and intervals during normal significant wildland fire potential conditions.
Significant wildland fires are still possible but less likely than usual during forecasted below normal periods.

Significant Wildland Fire Potential Outlook

June 2026

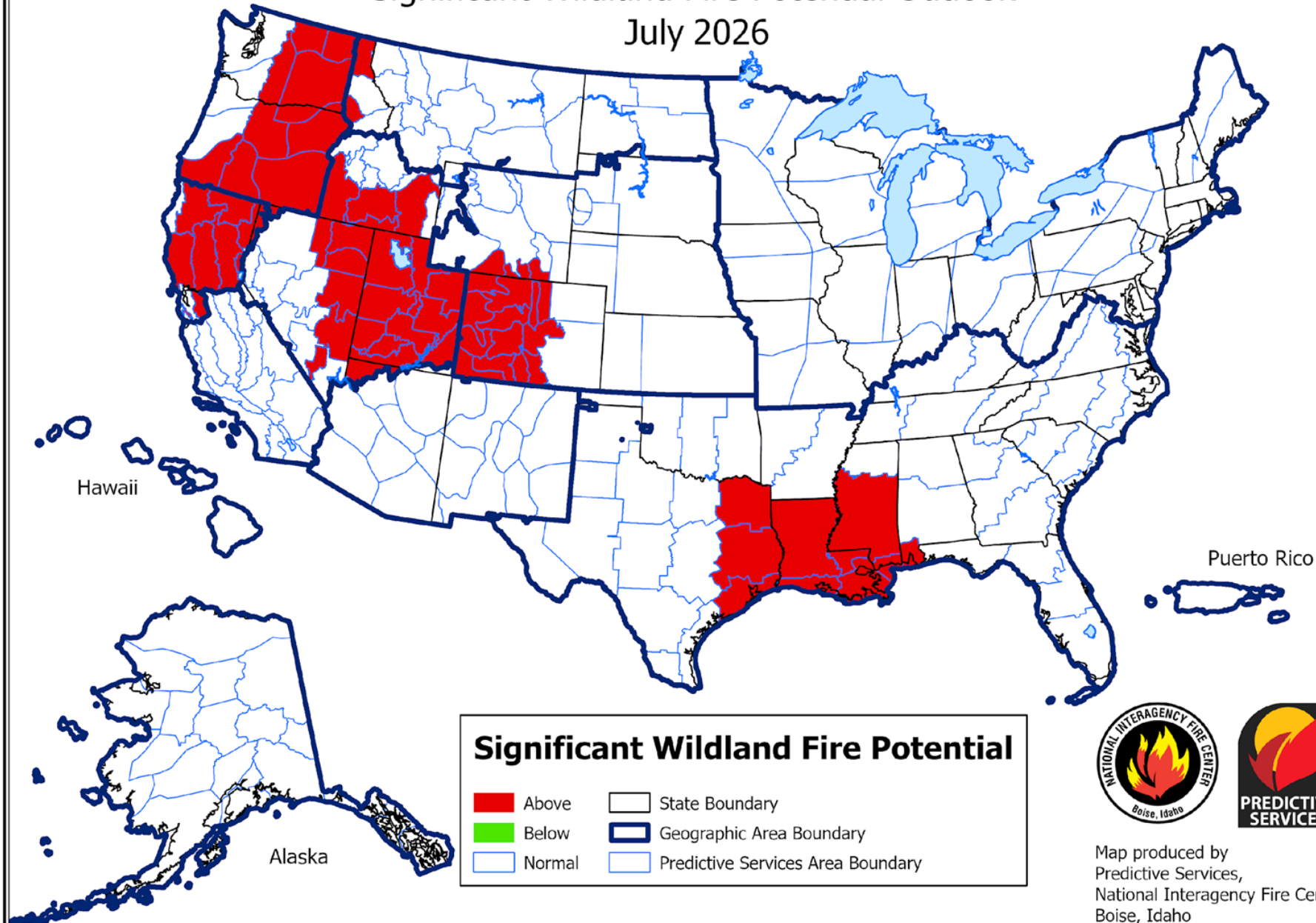


Above normal significant wildland fire potential indicates a greater than usual likelihood that significant wildland fires will occur.
Significant wildland fires should be expected at typical times and intervals during normal significant wildland fire potential conditions.
Significant wildland fires are still possible but less likely than usual during forecasted below normal periods.



Map produced by
Predictive Services,
National Interagency Fire Center
Boise, Idaho
Issued: April 1, 2026
Next Issue: May 1, 2026

Significant Wildland Fire Potential Outlook July 2026



Map produced by
Predictive Services,
National Interagency Fire Center
Boise, Idaho
Issued: April 1, 2026
Next Issue: May 1, 2026

Above normal significant wildland fire potential indicates a greater than usual likelihood that significant wildland fires will occur.
Significant wildland fires should be expected at typical times and intervals during normal significant wildland fire potential conditions.
Significant wildland fires are still possible but less likely than usual during forecasted below normal periods.

Resiliency

Angie Davlyn, Wildfire Collaborative Roaring Fork Valley

Angie@RFVwildfire.org

ADVANCED WILDFIRE MODELING

CARBONDALE

MARBLE

4 MILE

3 MILE

SNOWMASS VILLAGE

ASPEN

FUEL REDUCTION

NORTH MT. SOPRIS

BASALT

4 MILE

3 MILE

SNOWMASS VILLAGE

ASPEN

RX BURN

SUNNYSIDE RX BURN

TWIN PEAKS RX BURN

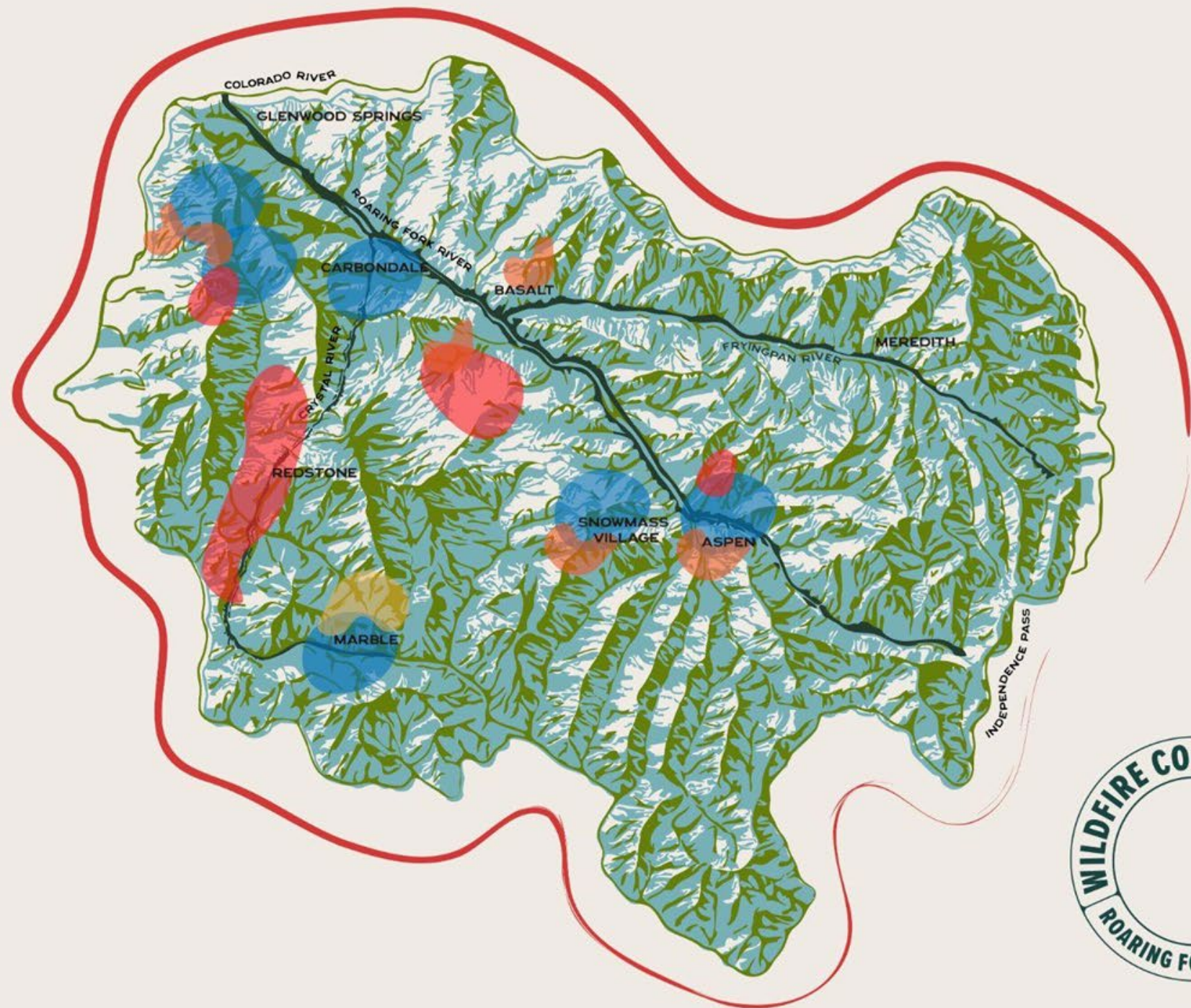
CRYSTAL RIVER RX BURN

EAST SOPRIS CREEK RX BURN

EVACUATION

SERPENTINE

EVACUATION PROJECT



Preparedness & Compliance

- Garfield County – EM, Chris Bornholdt
- Garfield County – Sheriff, Lou Vallario
- Pitkin County – EM, Chris Breitbach
- Pitkin County – Sheriff, Michael Buglione
- Gunnison County – EM, Lisa Bickford

PACKING A WILDFIRE EMERGENCY GRAB-AND-GO KIT



Water



Radio



Medications



Food



Phone & chargers



Change of clothes



First aid



Batteries



Wildfires start small... so can prevention.

WHAT IS A RED FLAG WARNING?

A Red Flag Warning is the **HIGHEST** level of warning for fires.



- A Red Flag Warning means there's increased fire danger in your area.
- You wouldn't ignore a tornado warning, and you shouldn't ignore a Red Flag Warning.
- Not taking it seriously can lead to your family getting trapped.
- Be ready to leave your house in **FIVE MINUTES** if ordered to evacuate.



PITKIN COUNTY STAGE 1 FIRE RESTRICTIONS

FIRES RESTRICTED

Fires are prohibited except in the following cases:

- In designated fire areas of developed recreation sites.
- In permanent fire pits or fire rings at private residences that are enclosed in steel or concrete.
- In devices that can be turned on and off with a valve, such as gas grills or natural gas/propane fire pits and fireplaces.

FIREWORKS PROHIBITED

Revolving, discharging, or using fireworks or other devices creating fire, smoke, or sparks is prohibited.

SMOKING PROHIBITED

Smoking is prohibited except within an enclosed vehicle, building, or an outdoor urban area free of flammable materials.

SPARK-PRODUCING DEVICES RESTRICTED

Welding equipment, torches, and engines without spark arresters may only be used where:

- Operated in a closed area free of flammable materials, and a fire extinguisher is readily available.
- Commercial operators may apply for an exemption permit on pitkinemergency.org



Conditions can change quickly.

Stay informed at pitkinemergency.org.



Download the ReachMail app to get local emergency updates right in your phone. Search "Pitkin County" in the app to get started.

Protect Our Community — Follow Stage 2 Fire Restrictions



PITKIN COUNTY STAGE 2 FIRE RESTRICTIONS

FIRES PROHIBITED

No Open Fires: Open fires of any kind are prohibited. This includes: Campfires, Charcoal grills, wood-burning stoves, wood-burning fireplaces, open flame grills and fires in developed recreation sites, campgrounds, and on private property.

Devices that can be turned on and off with a valve, such as propane or natural gas grills, stoves, and barbeques, are permitted only when used at least ten feet away from flammable materials such as grass, leaves, or pine needles.

FIREWORKS PROHIBITED

Revolving, discharging, or using fireworks or other devices creating fire, smoke, or sparks is prohibited.

SMOKING PROHIBITED

Smoking is prohibited except within an enclosed vehicle, building, or an outdoor urban area free of flammable materials.

OFF-ROAD DRIVING PROHIBITED

Driving or parking vehicles in fields or other vegetated areas is prohibited, except in areas cleared of vegetation.

SPARK-PRODUCING DEVICES PROHIBITED

Operation of equipment powered by internal combustion engines (such as chainsaws, generators, or generators) is prohibited unless the equipment is equipped with a spark arrester. It is operated in an area cleared of vegetation and a fire extinguisher is readily available.

WELDING AND TORCH USE PROHIBITED

Welding or using torch engines are prohibited. Exemption permits for commercial activity can be obtained on pitkinemergency.org.



Conditions can change quickly.

Stay informed at pitkinemergency.org.



Download the ReachMail app to get local emergency updates right in your phone. Search "Pitkin County" in the app to get started.



LEVEL 1

BE READY

PREPARE TO EVACUATE
BE AWARE OF DANGER IN THE AREA

- Stay informed.
- Have your plan & go-kit ready.
- Act early if you or your loved ones can't move quickly.



LEVEL 2

BE SET

BE SET TO EVACUATE
AT A MOMENT'S NOTICE
SIGNIFICANT DANGER IN THE AREA

- Follow your evacuation plan & grab your go-kit.
- Check news & radio for updates.
- Conditions change rapidly. Leave if you feel unsafe.



LEVEL 3

GO NOW!

LEAVE IMMEDIATELY!
EXTREME DANGER IN THE AREA

- Leave without delay. It is unsafe to stay.
- Do not stop to gather belongings or protect your home.
- Do not return until officials announce the area is safe.



Emergency Notifications



EMERGENCY NOTIFICATIONS

- **Alerts**
- Pitkin County – pitkinalert.org
- Garfield County -
<https://member.everbridge.net/index/3531635643383892#/signup>
- Reachwell - The logo for ReachWell features a stylized yellow paper airplane flying upwards and to the right, set against a teal background. Below the graphic, the word "ReachWell" is written in a dark grey, sans-serif font.
- Facebook - CRFPD, Pitkin County, Garfield County

Wildfire Response Readiness

A photograph of a wildfire on a hillside. In the foreground, there are green trees and a red brick building. In the middle ground, there are more trees and houses. In the background, a hillside is covered in smoke and fire. A fire retardant plane is flying in the sky, dropping a large amount of red foam onto the fire.

- **Carbondale & Rural Fire Protection District**
- **Pitkin County and Garfield County Resources**
- **Regional Agencies and Resources**



CARBONDALE & RURAL FIRE PROTECTION DISTRICT

COMPASSION | CULTURE | COMMITMENT

Operations Report May 2026

Important Events & Projects

- Structure Fire on County Road 110. Excellent response and initial attack performed by crew from station 84. Mutual aid resources received from Glenwood Springs Fire & Roaring Fork Fire.
- Continued work on updating Standard Operating Guidelines.
- Planning and coordination with the Wildland Fire Division for summer staffing, patrol coverage, and response readiness.

Calls for Service

Month	2026	2025	% Change 2025 to 2026
January Incidents	113	144	-22%
February Incidents	128	127	1%
March Incidents	162	137	18%
April Incidents	152	127	20%
Total	555	535	4%

	26-Jan	26-Feb	26-Mar	26-Apr
Incident Type Primary (filncident.03)	Incidents	Incidents	Incidents	Incidents
Incident Type Primary : None				
Law Enforcement Support	1	1	0	4
Wildland Fire Deployment	0	0	1	0
Wildfire Mitigation Assessment	0	1	15	31
Wildfire Mitigation Project	0	0	1	0
Public Education - CPR, First Aid, Fire Safety	0	3	1	8
Special Incident, Other	1	0	0	5

Special Event	0	2	0	0
Fire Station Tour	0	0	1	0
Mutual Aid Ambulance Standby Provided to Roaring Fork Fire	0	0	1	0
TOTAL	2	7	20	48
Incident Type Primary : Fire				
Fire - Outside Fire - Trash / Rubbish Fire	0	1	0	1
Fire - Structure Fire - Structural Involvement	0	1	0	1
Fire - Outside Fire - Construction Waste	0	0	1	0
Fire - Outside Fire - Other Outside Fire	0	0	1	1
Fire - Outside Fire - Vegetation / Grass Fire	0	0	1	0
Fire - Outside Fire - Wildfire - Wildland	0	0	1	0
TOTAL	0	2	4	3
Incident Type Primary: Hazardous Situation				
Hazardous Situation - Hazard Nonchemical - Electrical Hazard	0	0	1	0
Hazardous Situation - Hazard Nonchemical - Electrical Power	0	0	1	1
Hazardous Situation - Hazard Nonchemical - Motor Vehicle Collision	2	2	3	0
Hazardous Situation - Hazardous Materials - Carbon Monoxide	1	1	1	0
Hazardous Situation - Hazardous Materials - Fuel Spill	0	1	0	0
Hazardous Situation - Hazardous Materials - Gas Leak	0	5	3	0
Hazardous Situation - Investigation - Odor	1	1	2	1
Hazardous Situation - Investigation - Smoke Investigation	0	0	1	0
Non-injury - Motor Vehicle Collision (MVA)	0	0	0	3
TOTAL	4	10	12	5
Incident Type Primary: Medical				
Medical - Illness	0	0	0	1
Medical - Illness - Abdominal Pain / Problems	5	4	1	3
Medical - Illness - Allergic Reaction / Stings	0	0	3	1
Medical - Illness - Altered Mental Status	3	3	1	1
Medical - Illness - Back Pain (Non - Trauma)	2	3	1	0
Medical - Illness - Breathing Problems	4	6	6	6
Medical - Illness - Cardiac Arrest	0	2	0	0
Medical - Illness - Chest Pain (Non - Trauma)	2	1	6	6
Medical - Illness - Convulsions / Seizures	2	2	6	1
Medical - Illness - Diabetic Problems	1	0	1	0
Medical - Illness - Headache	4	2	1	0
Medical - Illness - Heart Problems	0	4	1	1
Medical - Illness - Nausea / Vomiting	0	0	3	2

Medical - Illness - No Appropriate Choice	1	2	0	3	
Medical - Illness - Overdose / Poisoning	3	3	3	0	
Medical - Illness - Pregnancy / Childbirth	0	1	1	0	
Medical - Illness - Psychological Behavior Issues	4	4	4	1	
Medical - Illness - Sick Case	8	2	7	2	
Medical - Illness - Stroke / CVA	5	6	1	1	
Medical - Illness - Unconscious Victim	0	0	2	0	
Medical - Illness - Unknown Problem	4	2	1	3	
Medical - Illness - Well Person Check	1	0	0	0	
Medical - Injury / Trauma - Assault	1	1	1	0	
Medical - Injury / Trauma - Choking	0	0	0	1	
Medical - Injury / Trauma - Fall	4	6	13	11	
Medical - Injury / Trauma - Hemorrhage / Laceration	1	1	3	1	
Medical - Injury / Trauma - Motor Vehicle Collision	2	3	4	7	
Medical - Injury / Trauma - Other Traumatic Injury	0	3	1	0	
Medical - Other - Intercept Other Unit	0	0	0	1	
Medical - Other - Medical Alarm	1	4	2	0	
Medical - Other - Standby Request	0	0	0	1	
	58	65	73	54	
Incident Type Primary: No Emergency					
No Emergency - Cancelled	15	18	15	8	
No Emergency - False Alarm - Accidental Alarm	4	2	8	7	
No Emergency - False Alarm - Intentional False Alarm	0	1	1	0	
No Emergency - False Alarm - Malfunctioning Alarm	5	1	4	3	
No Emergency - False Alarm - Other False Call	0	1	0	0	
No Emergency - False Alarm - Investigate Hazardouse Release	1	0	0	1	
No Emergency - Good Intent - Controlled Burning (Authorized)	0	1	1	3	
No Emergency - Good Intent - No Incident Found Upon Arrival	4	5	4	4	
No Emergency - Good Intent - Smoke From Nonhostile Source	0	1	2	2	
	TOTAL	29	30	35	28
Incident Type Primary: Public Service					
Public Service - Alarms (Non Medical) - CO Alarm	4	1	4	2	
Public Service - Alarms (Non Medical) - Fire / Smoke Alarm	4	7	9	8	
Public Service - Alarms (Non Medical) - Gas Alarm	0	0	1	0	
Public Service - Alarms (Non Medical) - Other Alarm	0	0	0	1	
Public Service - Citizen Assist - Citizen Assist / Service Call	2	2	3	0	
Public Service - Citizen Assist - Lift Assist	5	3	0	1	
Public Service - Citizen Assist - Person In Distress	0	1	0	0	
Public Service - Citizen Assist - Lost Person	1	0	0	0	

Public Service - Standby	1	0	0	0
TOTAL	17	14	17	12
Incident Type Primary: Rescue				
Rescue - Structure - Elevator/Escalator Rescue	2	0	0	2
Rescue - Transportation (Land) - Motor Vehicle Extrication	1	0	1	0
TOTAL	3	0	1	2
	26-Jan	26-Feb	26-Mar	26-Apr
2026 Total Incidents Per Month	113	128	162	152

Respectfully Submitted,

Michael Wagner
Deputy Chief

Board of Directors Report – Prevention

April 2026

Completed Plan/Code Reviews:

- Adaption of the 2021 and Ch 12 of the 2024 IFC.
- Solar installation in Carbondale including ESS systems.
- Fire alarm system for 522 CORD 133.
- 4020 CR 103, Lewis Minor Subdivision.
- 960 CR 170.
- Emergency Egress Easement for Dolar Store building.
- 4243 Hwy 133.
- Elk Masa Grading Permit review.
- Sprinkler inquirer for Sages at Aspen Glen.

Inspections:

- School Inspections = 5
- Day Care Inspections = 2
- Food Truck Inspections = 4

Other Projects:

- Wildfire Risk Assessments = 30
- FMAC meeting.
- Hosted a wildfire home risk assessment training for surrounding fire agencies.
- Request for fire investigation report at 477 Rose Ln.
- FOIA Request for 545

Fire Investigations:

- Red Dog Road structure fire
- 596 CORD 110



EMS Report April 2026

EMS Patients April 2026 –

58 EMS Patient contacts in April 2026

Projects and updates–

- Manage EMS Ordering/inventory for CRFPD
- Maintain supplies/medications in vending machine for CRFPD
- Controlled substance monitoring and inventory
- Fire/EMS Report review, NERIS /NEMSIS submissions and Q&A
- Attended SEMTAC Grant Review
- Attended Region MAMA Meeting
- Attended Tesla Battery Center Training
- Coordinated Dr. Drake Q&A For members
- Attended Garco ESF8 and Public Safety Meeting
- Attended Evac/Safety meeting at Senior housing
- Regular staff/Chief meetings
- Assisted with coordinating staffing for shifts/special events
- Covered On Call Chief rotation shifts
- Incident response in district as needed
- Assisted volunteers/Staff with projects and task books as needed

Respectfully submitted,
Garrett Kennedy
Assistant Chief



Board of Directors Report

Pablo Herr- Assistant Chief
May, 2026

Prevention/outreach/education-

- Waldorf School on the Roaring Fork - 7th Graders “Combustion & Fire Behavior”
- Hands Only CPR @ RVR w/ Dr. Mike Grillot
- Garfield County Senior Lunch
- Andrea Palm Porter Team Meeting
- CRFPD reserved the Community Fire Trailer w/ DFPC for Open House 2026
- Carbondale Chamber Business After Hours @ Mountain Tide 423 Main Street

Inspections-

- 1422 High Aspen Ranch Fire Sprinkler Final (Pass)
- 12 Weeping Willow Fire Sprinkler Rough In (Fail)
- 1530 Hwy 133 Carbondale FDC/Strobe placement w/ Integrity & GC
- Callicotte Ranch Fire Truck Turn Around – John Farr Design Workshop
- Dorias Way Fire Truck Turn Around PITCO Open Space & Trails – SGM

April 30, 2026

		Interest Rate
General Fund		
Alpine Checking	1,016,860.96	0.00%
Alpine Money Market Fund	<u>2,622,038.18</u>	3.45%
TOTAL	\$ 3,638,899.14	
Capital Projects Fund #1		
Alpine Checking	58,175.13	0.00%
Alpine Money Market Fund	233,538.66	3.45%
Alpine Impact Fee Fund	<u>11,269.19</u>	3.45%
TOTAL	\$ 302,982.98	
Capital Projects Fund 26		
Alpine Checking	230,233.98	0.00%
Csafe	<u>33,127,362.61</u>	3.83%
TOTAL	\$ 33,357,596.59	
Capital Replacement Fund		
Csafe	\$ 198,082.08	3.83%
Bond Fund		
Csafe	\$ 175,088.62	3.83%
Pension Fund		
FPPA	\$ 2,308,364.02	

Ambulance Billing Report

March 2026

Cash Collected on Accounts	\$ 37,264.14
New Accounts Billed	\$ 85,392.50
Medicare, Medicaid & Other Write-Offs	\$ 53,020.75

Aging Report

<u>0-30 Days</u>	<u>31-60 Days</u>	<u>61-90 Days</u>	<u>>90 Days</u>	<u>Total</u>
\$85,516.89	\$39,299.11	\$24,971.91	\$56,769.35	\$206,557.26

Checks Issued Between Board Meetings

General Fund

Sopris Engineering	\$2,778.84
Jose Lopez	\$400.00

Capital Projects Fund

none

Capital Projects 26 Fund

Columbine Ford	\$196,317.00
BeBrEm Construction	\$61,686.00
Columbine Ford	\$31,912.00
Network Interiors	\$22,031.02

Miscellaneous Income

General Fund

Wildfire Contracts (2025)	\$103,034.45
Wildfire Contracts (2025)	\$114,557.00
CPR Training	\$86.00

Capital Projects Fund

none

Capital Projects 26 Fund

US Bank	\$15,221.16	remaining bond closing funds
---------	-------------	------------------------------

2:46 PM

Carbondale & Rural Fire Protection District
Electronic Payments
April 2026

05/08/26

Accrual Basis

Date	Name	Amount
1110 · Alpine Bank-Checking GF		
04/01/2026	Mountain Waste & Recycling	-65.19
04/01/2026	Mountain Waste & Recycling	-844.32
04/01/2026	Mountain Waste & Recycling	-61.80
04/01/2026	Valley Waste Solutions, LLC	-159.10
04/01/2026	Valley Waste Solutions, LLC	-150.05
04/02/2026	Streamline	-524.00
04/03/2026	Holy Cross Energy	-337.69
04/03/2026	Holy Cross Energy	-138.20
04/03/2026	Holy Cross Energy	-47.31
04/03/2026	Holy Cross Energy	-23.25
04/03/2026	Intermedia	-1,152.75
04/03/2026	Intuit Checks	-595.13
04/03/2026	Holy Cross Energy	-37.55
04/05/2026	Xcel Energy	-47.52
04/05/2026	Xcel Energy	-2,360.60
04/06/2026	Bamboo HR	-1,228.87
04/07/2026	Verizon Wireless	-1,046.97
04/07/2026	Granite Telecommunications	-913.89
04/08/2026	Amazon Business	-5,482.06
04/09/2026	Staples Business Credit	-555.20
04/10/2026	Colorado State Treasurer	-2,127.17
04/17/2026	Cenex Fleetcard	-3,594.67
04/18/2026	Comcast (epay)	-33.00
04/19/2026	Lumen/Century Link Business	-58.51
04/19/2026	Comcast (epay)	-142.69
04/20/2026	Moody-Valley Insurance Ag...	-17,988.50
04/21/2026	Amazon Business	-950.51
04/21/2026	Harbor Freight	-352.03
04/22/2026	Holy Cross Energy	-254.79
04/23/2026	Cenex Fleetcard	-5,169.68
04/24/2026	Pinnacol Assurance	-13,016.00
04/24/2026	UMB	-23,547.95
04/25/2026	Redstone Water & Sanitatio...	-342.00
04/26/2026	Comcast (epay)	-299.12
04/30/2026	Xerox Corporation	-274.74
04/30/2026	Xerox Corporation	-393.72
Total 1110 · Alpine Bank-Checking GF		-84,316.53
TOTAL		-84,316.53

2:48 PM

Carbondale & Rural Fire Protection District Payroll Transactions

05/08/26

Accrual Basis

April 2026

<u>Date</u>	<u>Name</u>	<u>Amount</u>
1110 · Alpine Bank-Checking GF		
04/09/2026	QuickBooks Payroll S...	-140,261.43
04/10/2026	Colorado Department ...	-7,671.00
04/10/2026	United States Treasury	-32,989.02
04/10/2026	FPPA	-61,590.12
04/21/2026	QuickBooks Payroll S...	-1,037.49
04/23/2026	QuickBooks Payroll S...	-139,579.31
04/24/2026	Colorado Department ...	-41.00
04/24/2026	Colorado Department ...	-7,497.00
04/24/2026	United States Treasury	-30,896.12
04/24/2026	FPPA	-64,263.88
Total 1110 · Alpine Bank-Checking GF		-485,826.37
TOTAL		-485,826.37

2:46 PM

Carbondale & Rural Fire Protection District
General Fund Check Register
May 13, 2026

05/08/26

Accrual Basis

Num	Date	Name	Amount
1110 · Alpine Bank-Checking GF			
43830	05/13/2026	Ace Hardware	-878.51
43831	05/13/2026	Acme Fire Alarm Company I...	-3,355.10
43832	05/13/2026	Airgas USA, LLC	-674.67
43833	05/13/2026	Alpine Tire Co., Inc.	-1,683.56
43834	05/13/2026	Armand Advertising LLC	-1,200.44
43835	05/13/2026	Basalt Printing & Art Supply	-130.20
43836	05/13/2026	Bechtel & Santo	-806.00
43837	05/13/2026	Bound Tree Medical, LLC	-1,210.79
43838	05/13/2026	Carbondale Chamber of Com...	-316.80
43839	05/13/2026	Cedar Networks	-916.01
43840	05/13/2026	Century Link	-147.13
43841	05/13/2026	Colorado Division of Fire Pre...	-290.00
43842	05/13/2026	Colorado Mountain College	-10,948.00
43843	05/13/2026	Comcast	-41.45
43844	05/13/2026	CSafe Account 84-0758192-10	-710,178.66
43845	05/13/2026	Devon Blanchard	-17.07
43846	05/13/2026	Elite Building Care, Inc.	-1,560.00
43847	05/13/2026	Employers Council Services, ...	-112.00
43848	05/13/2026	EMS Management & Consult...	-2,887.97
43849	05/13/2026	Ethan Harvey	-1,122.00
43850	05/13/2026	First Due/Locality Media, Inc.	-10,086.05
43851	05/13/2026	Galls, LLC	-1,882.47
43852	05/13/2026	Glenwood Springs Ford	-874.18
43853	05/13/2026	Grainger	-68.20
43854	05/13/2026	Harlan Nimmo	-35.00
43855	05/13/2026	Ikon Fire, LLC	-851.59
43856	05/13/2026	Impressions of Aspen, Inc.	-137.92
43857	05/13/2026	Ireland Stapleton, PC	-81.00
43858	05/13/2026	Kroger - King Soopers Custo...	-129.99
43859	05/13/2026	Kyle Franklin	-372.97
43860	05/13/2026	Life Assist, Inc.	-1,482.06
43861	05/13/2026	Marble Water Company	-130.00
43862	05/13/2026	Masimo Americas Inc	-240.00
43863	05/13/2026	McCandless Truck Center LLC	-189.95
43864	05/13/2026	Merchology	-6,148.48
43865	05/13/2026	Micro Plastics, Inc.	-461.91
43866	05/13/2026	Mountain Pest Control, Inc.	-346.00
43867	05/13/2026	Napa Auto Parts	-3,481.28
43868	05/13/2026	Novus Glass Carbondale	-2,170.00
43869	05/13/2026	Pacific Sheet Metal, Inc.	-1,029.75
43870	05/13/2026	Pitkin County Treasurer	-42,906.00
43871	05/13/2026	Potestio Brothers Equipment	-58.98
43872	05/13/2026	Roaring Fork Leadership	-3,500.00
43873	05/13/2026	Roaring Fork Rentals	-1,188.48
43874	05/13/2026	Roaring Fork Valley Co-Op	-599.62
43875	05/13/2026	ROI Fire & Ballistics Equip, I...	-558.00
43876	05/13/2026	Rosenbauer Minnesota, LLC	-7,689.25
43877	05/13/2026	Slow Groovin' BBQ	-842.70
43878	05/13/2026	Specialty Incentives	-4,389.01
43879	05/13/2026	Stryker Sales Corporation	-443.23
43880	05/13/2026	Triad EAP	-2,196.00
43881	05/13/2026	Two Valley Tire	-2,696.32
43882	05/13/2026	Western Paper Distributors	-698.00
43883	05/13/2026	Wildfire Preparedness Servic...	-3,500.00
43884	05/13/2026	Witmer Public Safety Group, ...	-1,578.13
Total 1110 · Alpine Bank-Checking GF			-841,518.88
TOTAL			-841,518.88

Capital Projects Fund
Check Register
May 13, 2026

<u>Date</u>	<u>Num</u>	<u>Name</u>	<u>Amount</u>
1110 · Alpine Bank			
05/13/20	5469	BeBrEm LLC	-13,564.38
05/13/20	5470	Motorola Solutions, Inc.	-29,856.50
05/13/20	5471	PNCI Construction, Inc.	-5,432.00
05/13/20	5472	ProSpace Interiors, Inc.	-7,023.20
05/13/20	5473	Sopris Gates and Doors LLC	-365.44
05/13/20	5474	The Supply Cache	-42,025.50
05/13/20	5475	Tulsa Truck Manufacturing Co...	-59,500.00
Total 1110 · Alpine Bank			<u>-157,767.02</u>
TOTAL			<u>-157,767.02</u>

2:43 PM

05/08/26

Accrual Basis

CRFPD CPF 26
Check Listing by Bank Account
May 13, 2026

<u>Date</u>	<u>Num</u>	<u>Name</u>	<u>Amount</u>
1110 · Alpine Bank Checking			
05/13/202	5008	BG Architecture & Design	-45,443.40
05/13/202	5009	Columbine Ford	-5,717.25
05/13/202	5010	Kubat Equipment & Serv...	-54,939.00
05/13/202	5011	Phil Vaughn Constructio...	-34,515.17
05/13/202	5012	PNCI Construction, Inc.	-2,375.00
05/13/202	5013	W Mountain Surveys LLC	-2,300.00
Total 1110 · Alpine Bank Checking			-145,289.82
TOTAL			<u>-145,289.82</u>

Carbondale & Rural Fire Protection District Income Statement January through December 2026

	Jan - Dec 26	Budget	\$ Over Budget	% of Budget
Income				
4000 · Taxes				
4010 · Property Tax	3,284,764.95	7,562,411.00	-4,277,646.05	43.4%
4020 · Specific Ownership Tax	168,386.44	453,745.00	-285,358.56	37.1%
4030 · Interest & Penalties	163.37	10,000.00	-9,836.63	1.6%
4040 · Delinquent Tax	55.52	1,000.00	-944.48	5.6%
4050 · Abated Tax	11,977.00	11,977.00	0.00	100.0%
4070 · Exempt Personal Property	0.00	4,964.00	-4,964.00	0.0%
4100 · Sales Tax	593,039.48	4,300,000.00	-3,706,960.52	13.8%
Total 4000 · Taxes	4,058,386.76	12,344,097.00	-8,285,710.24	32.9%
4200 · Other Revenue				
4210 · Ambulance Service	124,676.08	625,000.00	-500,323.92	19.9%
4220 · Wildfire Contracts	623,241.55	375,000.00	248,241.55	166.2%
4221 · Mitigation Projects	0.00	25,000.00	-25,000.00	0.0%
4250 · Interest	10,032.62	80,000.00	-69,967.38	12.5%
4300 · Building Rentals	11,650.00	47,000.00	-35,350.00	24.8%
4350 · Grants & Contributions	2,500.00	1,000.00	1,500.00	250.0%
4360 · Training Reimbursements	0.00	1,000.00	-1,000.00	0.0%
4361 · CPR training Income	1,766.00	4,000.00	-2,234.00	44.2%
4797 · Heart Trust Reimbursement	16,797.00	5,000.00	11,797.00	335.9%
4798 · Volunteer Fund	0.00	1,000.00	-1,000.00	0.0%
4799 · Vending Machine	527.71	1,000.00	-472.29	52.8%
4800 · Miscellaneous	3,018.94	10,000.00	-6,981.06	30.2%
Total 4200 · Other Revenue	794,209.90	1,175,000.00	-380,790.10	67.6%
Total Income	4,852,596.66	13,519,097.00	-8,666,500.34	35.9%
Gross Profit	4,852,596.66	13,519,097.00	-8,666,500.34	35.9%
Expense				
5000 · Personnel				
5010 · Wages				
5011 · Wages	1,907,175.45	5,439,203.00	-3,532,027.55	35.1%
5012 · Seasonal Staffing	150.00	75,000.00	-74,850.00	0.2%
Total 5010 · Wages	1,907,325.45	5,514,203.00	-3,606,877.55	34.6%
5013 · Wages - Reimbursable				
5014 · Special Event Wages	1,226.84			
5015 · Wildfire Contract Wages	57,793.86	5,000.00	52,793.86	1,155.9%
Total 5013 · Wages - Reimbursable	59,020.70	5,000.00	54,020.70	1,180.4%
5030 · Payroll Expenses	32,213.09	104,128.00	-71,914.91	30.9%
5035 · Unemployment Insurance	4,205.58	16,025.00	-11,819.42	26.2%
5040 · Health Benefits	323,423.37	1,021,145.00	-697,721.63	31.7%
5045 · Pension Benefits	199,135.61	553,378.00	-354,242.39	36.0%
5050 · 457 Contributions	16,203.49	44,522.00	-28,318.51	36.4%
5055 · Workers Comp	64,960.00	147,565.00	-82,605.00	44.0%
5060 · Disability	58,869.36	178,497.00	-119,627.64	33.0%
5061 · Heart & Cancer Trust	0.00	18,000.00	-18,000.00	0.0%
5062 · Peer Support Program	1,500.00	7,500.00	-6,000.00	20.0%
5070 · Uniforms	19,241.63	47,250.00	-28,008.37	40.7%
5071 · Class A Uniforms	0.00	13,500.00	-13,500.00	0.0%
5075 · Volunteer Meal Program	2,737.83	5,000.00	-2,262.17	54.8%
5076 · LOSAP Program	0.00	6,000.00	-6,000.00	0.0%

Carbondale & Rural Fire Protection District Income Statement January through December 2026

	Jan - Dec 26	Budget	\$ Over Budget	% of Budget
5077 · Volunteer Fund	0.00	5,000.00	-5,000.00	0.0%
5078 · Member Incentive	956.83	40,000.00	-39,043.17	2.4%
5079 · Health & Wellness	1,978.32	160,000.00	-158,021.68	1.2%
5080 · Board Members Pay	0.00	12,000.00	-12,000.00	0.0%
Total 5000 · Personnel	2,691,771.26	7,898,713.00	-5,206,941.74	34.1%
5100 · Administration				
5110 · Treasurer's Fees	73,059.77	181,618.00	-108,558.23	40.2%
5115 · Abated Taxes	1,296.86	1,000.00	296.86	129.7%
5116 · Sales Tax Collection Fees	0.00	143,190.00	-143,190.00	0.0%
5130 · Insurance	38,724.75	102,000.00	-63,275.25	38.0%
5132 · Legal	9,271.80	31,000.00	-21,728.20	29.9%
5133 · Accounting	0.00	22,000.00	-22,000.00	0.0%
5134 · Ambulance Billing Service	7,944.20	34,000.00	-26,055.80	23.4%
5135 · Election	8,109.51	0.00	8,109.51	100.0%
5140 · Office Supplies & Expenses	7,373.00	15,000.00	-7,627.00	49.2%
5150 · Fuel	7,865.97	22,000.00	-14,134.03	35.8%
5151 · Dues & Subscriptions	13,415.46	31,050.00	-17,634.54	43.2%
5152 · Postage & Shipping	500.78	2,025.00	-1,524.22	24.7%
5153 · Computer Supplies & Equipment	2,149.90	5,000.00	-2,850.10	43.0%
5154 · Technology Subscriptions	45,964.89	65,000.00	-19,035.11	70.7%
5155 · Vehicle/Building Security	0.00	10,000.00	-10,000.00	0.0%
5156 · Meetings	3,049.11	7,500.00	-4,450.89	40.7%
5160 · Emergency Management	0.00	5,000.00	-5,000.00	0.0%
5170 · Strategic Planning	0.00	10,000.00	-10,000.00	0.0%
5171 · Consulting	0.00	30,000.00	-30,000.00	0.0%
5180 · Public Outreach	21,894.13	60,000.00	-38,105.87	36.5%
5181 · Website	2,620.00	6,000.00	-3,380.00	43.7%
5182 · Translation	0.00	1,000.00	-1,000.00	0.0%
5183 · Fire/EMS Prevention	0.00	3,000.00	-3,000.00	0.0%
5190 · Vending Machine	449.24	2,000.00	-1,550.76	22.5%
Total 5100 · Administration	243,689.37	789,383.00	-545,693.63	30.9%
5400 · Firefighting				
5410 · Supplies & Expenses	5,998.60	25,000.00	-19,001.40	24.0%
5411 · Equipment	0.00	15,000.00	-15,000.00	0.0%
5412 · Firefighting PPE				
5413 · Structural PPE	3,732.68			
5414 · Wildfire PPE	6,976.21			
5412 · Firefighting PPE - Other	0.00	10,000.00	-10,000.00	0.0%
Total 5412 · Firefighting PPE	10,708.89	10,000.00	708.89	107.1%
5419 · Subscriptions	0.00	15,000.00	-15,000.00	0.0%
5420 · Fuel	5,359.94	16,200.00	-10,840.06	33.1%
5430 · Incident Resources	1,323.13	10,000.00	-8,676.87	13.2%
5440 · Fire Investigation Supplies	1,082.40	1,350.00	-267.60	80.2%
Total 5400 · Firefighting	24,472.96	92,550.00	-68,077.04	26.4%
5450 · Wildland				
5455 · Supplies & Expenses	12,570.98	1,350.00	11,220.98	931.2%
5456 · Equipment	10,155.58	20,250.00	-10,094.42	50.2%
5457 · Fuel	0.00	0.00	0.00	0.0%
5459 · RFV Wildfire Collaborative	40,000.00	40,000.00	0.00	100.0%
5460 · Deployment Expenses	9,889.28	1,350.00	8,539.28	732.5%

Carbondale & Rural Fire Protection District Income Statement January through December 2026

	Jan - Dec 26	Budget	\$ Over Budget	% of Budget
5470 · Mitigation Projects	17.07	50,000.00	-49,982.93	0.0%
5490 · IA Program	0.00	7,500.00	-7,500.00	0.0%
Total 5450 · Wildland	72,632.91	120,450.00	-47,817.09	60.3%
5500 · Medical				
5510 · Supplies & Expenses	18,183.57	50,000.00	-31,816.43	36.4%
5511 · Equipment	0.00	1,500.00	-1,500.00	0.0%
5512 · EMS PPE	0.00	2,500.00	-2,500.00	0.0%
5515 · Infection Control	0.00	1,000.00	-1,000.00	0.0%
5519 · Subscriptions	30,468.70	40,000.00	-9,531.30	76.2%
5520 · Fuel	4,113.66	12,000.00	-7,886.34	34.3%
5530 · Physician Advisor	30,000.00	28,350.00	1,650.00	105.8%
5540 · Rescue Equipment	32.95	5,000.00	-4,967.05	0.7%
Total 5500 · Medical	82,798.88	140,350.00	-57,551.12	59.0%
5600 · Communications				
5610 · Supplies & Expenses	1,522.73	15,000.00	-13,477.27	10.2%
5611 · Equipment	2,525.62	5,000.00	-2,474.38	50.5%
5612 · Radio Programming Services	42,906.00	33,750.00	9,156.00	127.1%
5620 · Telephone Service	7,460.37	25,000.00	-17,539.63	29.8%
5625 · Cell/Satellite Phones	4,033.73	12,000.00	-7,966.27	33.6%
5630 · Communications Center	0.00	45,000.00	-45,000.00	0.0%
Total 5600 · Communications	58,448.45	135,750.00	-77,301.55	43.1%
5700 · Training				
5710 · Medical	3,933.67	10,000.00	-6,066.33	39.3%
5711 · EMT Program	0.00	7,500.00	-7,500.00	0.0%
5712 · Paramedic Program	1,981.04	40,000.00	-38,018.96	5.0%
5713 · CPR training - public courses	1,633.56	3,500.00	-1,866.44	46.7%
5720 · Fire	5,348.46	15,000.00	-9,651.54	35.7%
5721 · Wildfire	1,990.00	4,000.00	-2,010.00	49.8%
5722 · Rescue	1,475.00	6,750.00	-5,275.00	21.9%
5730 · Administration	15,863.57	15,000.00	863.57	105.8%
5739 · Subscriptions	9,505.12	12,150.00	-2,644.88	78.2%
5740 · Equipment	0.00	2,500.00	-2,500.00	0.0%
5750 · Training Building & Grounds	73.94	2,500.00	-2,426.06	3.0%
5760 · Food	733.51	2,000.00	-1,266.49	36.7%
5790 · CMC Fire Academy	9,328.00	3,500.00	5,828.00	266.5%
5791 · CMC EMT Course	0.00	3,500.00	-3,500.00	0.0%
Total 5700 · Training	51,865.87	127,900.00	-76,034.13	40.6%
5800 · Equipment				
5809 · Vehicle Repairs	12,681.11	52,000.00	-39,318.89	24.4%
5810 · Vehicle Parts & Supplies	14,879.15	49,950.00	-35,070.85	29.8%
5811 · Vehicle Equipment	0.00	2,700.00	-2,700.00	0.0%
5812 · Tires	13,618.84	20,000.00	-6,381.16	68.1%
5813 · Equipment Testing	5,531.82	40,000.00	-34,468.18	13.8%
5814 · Shop Supplies	1,574.77	4,000.00	-2,425.23	39.4%
5815 · Tools	1,624.58	5,000.00	-3,375.42	32.5%
5820 · Communications Equipment Repair	0.00	2,500.00	-2,500.00	0.0%
5830 · Maintenance Subscriptions	4,548.35	5,000.00	-451.65	91.0%
5840 · Computer Repairs	0.00	2,500.00	-2,500.00	0.0%
5850 · Portable Equipment Repairs	0.00	675.00	-675.00	0.0%
5860 · Office Equipment Repairs	0.00	2,500.00	-2,500.00	0.0%

2:47 PM

05/08/26

Carbondale & Rural Fire Protection District

Income Statement

January through December 2026

	Jan - Dec 26	Budget	\$ Over Budget	% of Budget
Total 5800 · Equipment	54,458.62	186,825.00	-132,366.38	29.1%
5900 · Stations/Buildings				
5910 · Utilities	45,426.34	125,000.00	-79,573.66	36.3%
5915 · Internet	5,296.48	14,850.00	-9,553.52	35.7%
5920 · Equipment	0.00	20,250.00	-20,250.00	0.0%
5930 · Maintenance & Repairs	15,927.63	67,500.00	-51,572.37	23.6%
5940 · Supplies	10,019.99	33,750.00	-23,730.01	29.7%
Total 5900 · Stations/Buildings	76,670.44	261,350.00	-184,679.56	29.3%
6000 · Miscellaneous				
6010 · Miscellaneous	100.00	1,000.00	-900.00	10.0%
6050 · Transfer to CPF	0.00	750,000.00	-750,000.00	0.0%
6051 · Transfer to CRF	0.00	250,000.00	-250,000.00	0.0%
6052 · Transfer to AERF	0.00	861,834.00	-861,834.00	0.0%
6100 · TABOR Emergency Reserves	0.00	292,628.00	-292,628.00	0.0%
6000 · Miscellaneous - Other	3,721.39			
Total 6000 · Miscellaneous	3,821.39	2,155,462.00	-2,151,640.61	0.2%
Total Expense	3,360,630.15	11,908,733.00	-8,548,102.85	28.2%
Net Income	1,491,966.51	1,610,364.00	-118,397.49	92.6%



**RESOLUTION ADOPTING A PERMIT FEE SCHEDULE FOR THE
INTERNATIONAL FIRE CODE
2021 EDITION
RESOLUTION NO. 2026-006**

A RESOLUTION OF THE BOARD OF DIRECTORS OF THE CARBONDALE &
RURAL FIRE PROTECTION DISTRICT ADOPTING A PERMIT FEE SCHEDULE
FOR THE INTERNATIONAL FIRE CODE EFFECTIVE JULY 1, 2026

WHEREAS, pursuant to C.R.S. §32-1-1002(d), the Board of Directors of the Carbondale & Rural Fire Protection District (the “District”) adopted the International Fire Code, 2021 Edition (Code) on April 8 2026; and

WHEREAS, the Code authorizes the District to set out a permit fee schedule and collect permit fees related to the services required by District staff to apply and enforce the Code;

NOW, THEREFORE, BE IT RESOLVED by the Board of Directors of the Carbondale & Rural Fire Protection District as follows:

1. Permit Fee Schedule for the International Fire Code. The Board of Directors of the Carbondale & Rural Fire Protection District hereby adopts the Permit Fee Schedule attached as **Exhibit A** to this Resolution. The Board may amend the Schedule from time to time by a later Resolution.
2. The Permit Fee Schedule will take effect July 1, 2026 and shall apply only to the area within the municipal boundaries of the Town of Carbondale, Colorado.

INTRODUCED, READ, AND ADOPTED this 13th day of May, 2026.

CARBONDALE & RURAL FIRE PROTECTION DISTRICT

By: _____
Eugene K. Schilling, President

ATTEST:

Michael Hassig, Secretary/Treasurer



CARBONDALE & RURAL FIRE PROTECTION DISTRICT

COMPASSION | CULTURE | COMMITMENT

EXHIBIT A TO RESOLUTION 2026-006

Permit Fee Schedule

Effective July 1, 2026

The Fire Marshal is authorized to issue operational permits for the uses and operations set forth in this schedule

Town of Carbondale Fee Schedule

Plan Review and Inspections

Type of Permit	Description	Fee
New Building, Access Review, and Inspection	Review and inspection associated with construction permits for new buildings or projects involving modifications, changes, or alterations to building area, including occupancy changes.	\$0.30 per square foot - Residential \$0.50 per square foot - Commercial
Demolition Review and Inspection	Review and inspection associated with construction permits for demolition operations.	\$100
New Parking Structure	New parking structure built as part of a new building complex, or new parking structure built separately	\$0.20 per square foot
Demolition	Review and inspection associated with construction permits for demolition operations.	\$200
Automatic Sprinkler System 13, 13R (New)	Review and inspection of new automatic sprinkler systems installed in multi-family residential, hotel, business, or commercial facilities, including rough-in and final inspections.	\$400
Automatic Sprinkler System 13D (New)	Review and inspection of new automatic sprinkler systems installed in one- and two-story single-family dwellings and manufactured homes, including rough-in and final inspections.	\$200
Automatic Sprinkler System Modification	Review and inspection of extensions, modifications, or alterations to existing automatic sprinkler systems, including rough-in and final inspections.	\$200
Fire Protection Underground	Review and inspection associated with extensions, modifications, or alterations to underground fire service mains.	\$200
Standpipe	Review and inspection associated with installation of a standpipe system, including hose.	\$150

Type of Permit	Description	Fee
Fire Alarm System Modification	Review and inspection associated with extensions, modifications, or alterations to existing fire alarm systems.	\$200
Hood & Duct Fire Protection System	Review and inspection of hood and duct fire protection system installations.	\$200 for first system plus \$100 for each additional system installed
Water Tanks for Fire Protection	Review, inspection, and testing of water tanks or cisterns required by NFPA 1142 to provide water supply storage for manual firefighting.	\$200 per tank or cistern
Fire Pump	Review and inspection associated with installation of a fire pump, including jockey pump.	\$200
Fire Alarm System (New)	Review and inspection associated with installation or replacement of fire alarm systems.	\$200
Fire Alarm System Modification	Review and inspection associated with extensions, modifications, or alterations to existing fire alarm systems.	\$200
Mobile Food Unit Inspection	Inspection associated with renewal of an annual mobile food unit inspection.	\$50

Special Use/Miscellaneous Permits

Type of Permit	Description	Fee
Blasting, Temporary	Operational permit for the storage, handling, or use of explosives or explosive materials for a temporary blasting project. Maximum of 7 days permitted.	\$225 per project
Use of Fire Hydrants and Water Control Valves	Operational permit for the use of a fire hydrant or operation of a water control valve intended for fire suppression purposes.	\$100
Fireworks Outdoor Display	Operational permit for conducting an outdoor fireworks display, including review and inspection. Standby Fire Department Personnel are required and will be charged on a per hour basis.	\$200 for review and inspection plus Standby Personnel cost.

Type of Permit	Description	Fee
Pyrotechnical Special Effects Material	Operational permit for the use of pyrotechnical special effects materials, including review and inspection. Standby Fire Department Personnel are required and will be charged on a per hour basis. <i>A portion of fee may be waived if multiple events are on the same day</i>	\$200 for review and inspection plus Standby Personnel cost.
Temporary Membrane Structures, Tents, Canopy Tents, Canopies	Permit to erect or operate a tent or canopy with an area of 400 square feet or more, excluding structures used exclusively for recreational camping. Special event fees may apply when used as part of a special event. Maximum length of permit is 30 days.	\$75 for the first tent/canopy plus \$25 for each additional.
After Hours Inspection/Reinspection	Inspection conducted outside normal business hours (8 am – 4 pm Monday through Friday), including reinspection due to initial failure. Holiday or holiday weekend inspections are assessed at double the fee.	\$100 per hour, with a 2-hour minimum
Work Without a Permit or Pre-Approval	Fee assessed when work requiring a CRFPD permit has begun prior to obtaining the required permit.	Double the stated fees
Additional Plan Reviews	Fee for review of revised plans when changes are made to previously approved plans.	\$50
Miscellaneous Inspection or Review Fee	Inspection or review conducted during normal business hours when no other applicable fee is identified.	\$50

The Fire Marshal is authorized to make interpretations and clarification changes to this fee schedule. The Fire Marshal is authorized to collect inspection fees for construction permits and other items set forth in this schedule. The Fire Marshal may waive or reduce fees for nonprofit organizations or other governmental agencies. Any business or facility requesting a fee waiver must submit a written request to the Fire Marshal.

Permit Fees are due when plans are submitted for review. The fee applies regardless of whether the permit is subsequently issued or cancelled. Permit Fees must be paid prior to permit issuance.

Fees may be paid via check or at www.carbondalefire.org. Credit card payments are subject to a service fee charged by the credit card vendor.